

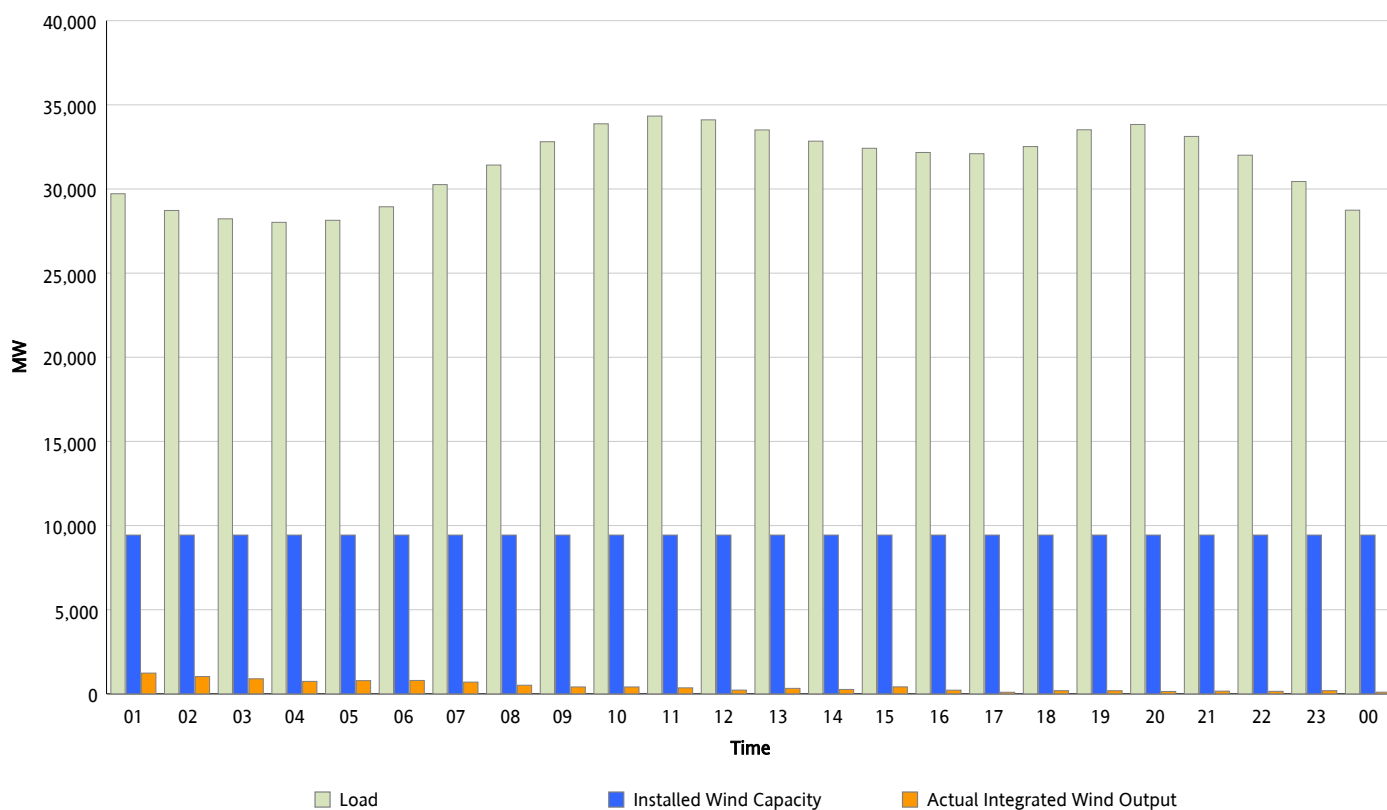


## ERCOT Grid Operations

### Wind Integration Report : 03/10/2012

Peak Load	34,334 MW
Load Peak Hour (HE)	11
Wind Over Peak	358 MW
Wind Record 03/07/12	7,599 MW
Max Wind Value*	1,480 MW
Wind Peak Time	00:00
Wind Integration %	4.86 %

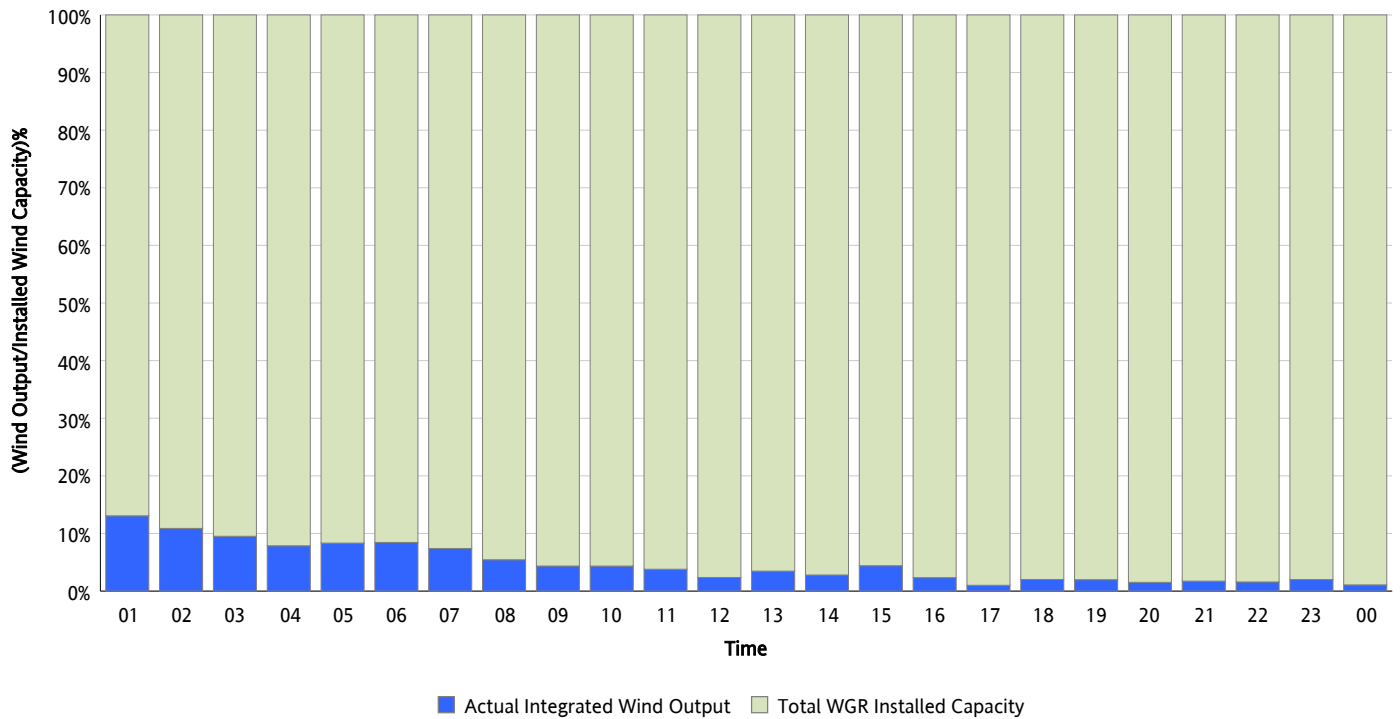
**Hourly Average Actual Load vs. Actual Wind Output**  
**03/10/2012**



\* Wind Record and Wind Max represent instantaneous values and the rest of the values are integrated over the hour

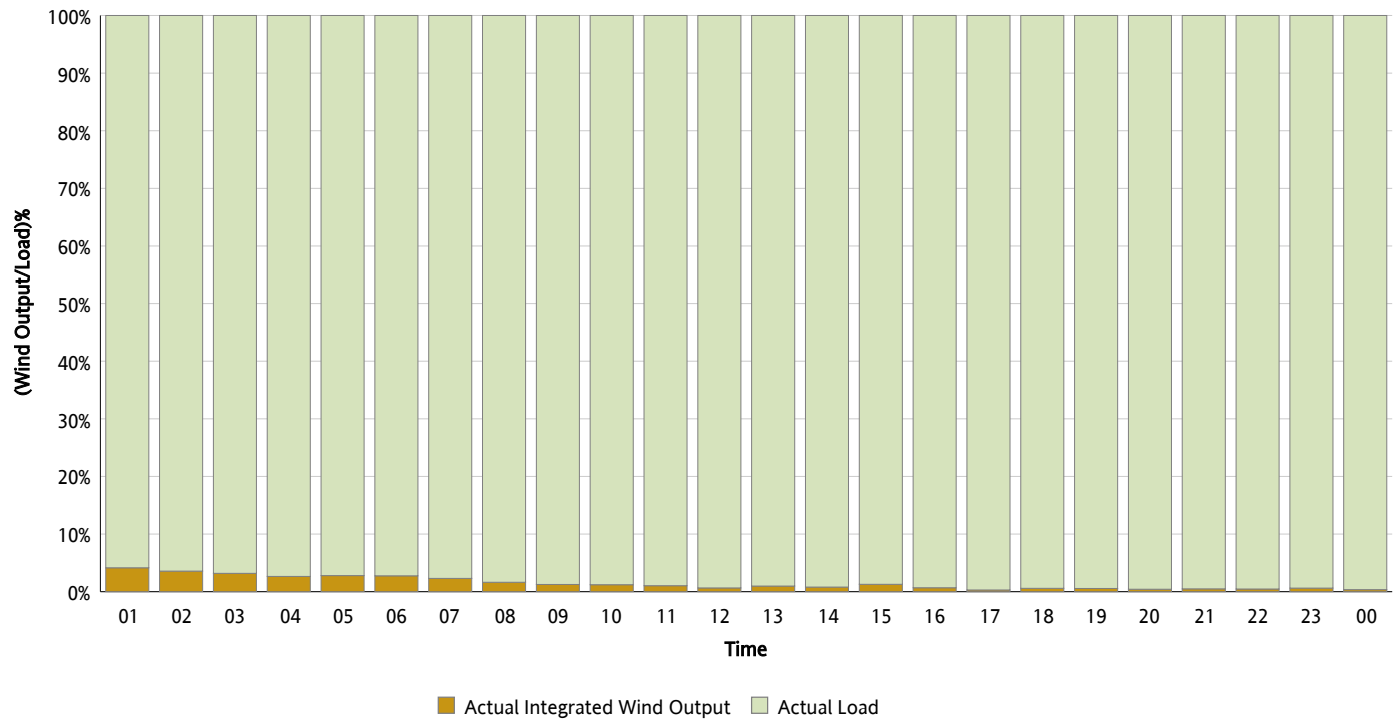
## Actual Wind Output as a Percentage of the Total Installed Wind Capacity

03/10/2012



## Actual Wind Output as a Percentage of the ERCOT Load

03/10/2012



## ERCOT Load vs. Actual Wind Output

03/03/2012 - 03/10/2012

